

PARTNER WITH US TO CONTINUE TO OFFER HELP & HOPE



CROSSNET MINISTRIES'

Expansion Project



Table of CONTENTS

01	Mission, Vision, Values, Goals
02	Our History
03	Our Board & Team
04	Purpose of Request
06	Building Plans
09	How to Get Involved
10	How to Give





Mission

CrossNet Ministries exists to offer help and hope in the name of Jesus Christ by empowering people in Eastern Lancaster County.

Purpose

CrossNet Ministries desires to empower people to build their resources for sustainability and to develop relationships with participants so that no one has to walk through life alone. Our goal is to collaborate to create a stronger and thriving community.

Programs

CrossNet programs focus on the areas of Youth, Social Services, Food & Nutrition and Community. Programs include a youth center, mentor program, tutoring program, after school programs for elementary school children, transportation ministry, housing programs, case management, food pantry, free summer lunch program, weekend meal solutions, opportunities to build life skills, money management workshops and more.



Values

- We Embrace a God-Sized Vision
- We Believe that Each and Every Person Matters
- We Bring our Best
- We Are a Catalyst for Change
- We Use Resources Well
- We Don't Have It All Figured Out
- We Are Better Together

Goals

CrossNet Ministries' objectives and goals include:

- Collaborating with other organizations to prevent duplication and make a greater impact in Eastern Lancaster County
- Creating programs that empower and equip individuals to work toward sustainability
- Addressing affordable housing with short-term, transitional and permanent housing solutions
- Combating hunger and making sure no one is hungry in our community
- Building life and emotional skills, academic success and relational support in the lives of children and teenagers
- Using Bridges Out of Poverty concepts to focus on empowerment and look at poverty through the lens of eleven resources
- Being a hub for resources and support for all those living in Eastern Lancaster County

Our HISTORY



Cross Connection Youth Center was formed in 1988 by a group of individuals at Weaverland Anabaptist Faith Community. In 1995, Cross Connection became an incorporated non-profit organization governed by a Board of Directors. Over the years, Cross Connection Youth Center was located in several places around New Holland until the ministry purchased its first building on Franklin Street in 2006.

In 2010, Cross Connection Youth Center became Cross Connection Ministries (CCM) when it expanded its programs to include mentoring, tutoring, free summer lunch and emergency assistance. The Cross Connection Resource Center was opened in 2011. In 2014, the Board began to look for a larger facility for the Youth Center to support the growth of the program. In 2017, the new Youth Center was opened.

ELANCO Social Services Network (ESSN) started in January of 2011 due to an increased need of services that were overwhelming to the local churches. The local Ministerium, working with the community, established ESSN to meet the needs of those in the ELANCO area.

While CCM and ESSN partnered together on an on-going basis, discussions in 2015 began between the Board of Directors of CCM and ESSN. Upon dialogue and evaluation, an overlap of programs and services was discovered which was causing confusion among community participants and donors.

Clients were observed exerting much energy and effort going between CCM and ESSN to address the varied needs in their lives.

Likewise, misunderstanding existed between the supporters of CCM and ESSN and the services each ministry provided to the community. After a year of prayer, discernment, and careful study, the CCM and ESSN Boards of Directors determined merging both organizations were in the best interests of the participants and community they served.

They believed the benefits of the merger would strengthen both organizations and the community as a whole! The merge would allow increased program impact, eliminate confusion, ensure no duplications of services, and show love to all participants in the name of Jesus Christ.

The merger became effective January 1, 2017.

CrossNet Ministries continues to focus on the areas of Youth, Social Services, Community and Food and Nutrition. Since the merger, we have been able to grow as an organization, offering new programs.

We have tripled our staff and increased the resources available to the community. We have been able to begin housing programs including developing the program, Pathways to Housing, a 12-18-month program for those experiencing homelessness in the community. After the merger, CrossNet implemented this program in partnership with churches and the community. CrossNet currently owns a property with eight apartment units and partners with churches for three additional units. CrossNet has also expanded food programs, after school programs for youth, money management services and support, created a transportation ministry, began offering early childhood services and increased partnerships with other organizations. Two new partnerships that began in 2021 include a home repair ministry in partnership with Servants, Inc. and adding a Success Coach in partnership with nine employers in Lancaster County to help people stay employed.

We seek to continue doing our very best to provide excellent services and programs, offering people not only support, but pathways out of poverty.



Growing and making an impact!

Our BOARD & TEAM

Board of Directors

Travis Eby	(Chair)	President, M.H. Eby, Inc
Brian Martin	(Vice Chair)	Lead Pastor, Weaverland Anabaptist Faith
Maria Buck	(Secretary)	Teacher, New Holland Elementary School
Matt Kulp	(Treasurer)	President, Showcase Properties
Derrick Martin		Controller, The Restaurant Store
Meredith Martin		Teacher, Ephrata School District
Marcia Leahy		Community member and volunteer
Judy Weaver		Former Owner, TrailSide Express
Carol Lehman		Realtor, Hostetter Realtor
Darrick Martin		Youth Pastor, Pine Grove Church
Ken Evitts		Pastor, St. Johns UCC
Brian Hollinger		Owner, Sundance Car Wash



Number of Paid Staff Hours and Volunteer Hours Per Week

Average Paid Staff Hours per week:	587
Average Volunteer Hours per week:	387



CrossNet Staff

Executive Director – Meredith Dahl
 Director of Development – Carl Edwards
 Director of Human Resources & Operations – Kim Glick
 Director of Social Services – Joan Yunginger
 Director of Outreach Events – Lisa Kerstetter
 Director of Marketing & Communications– Meghan Ervine
 Director of Youth Programs – Grant Gehman
 Director of Mentoring & Education – Charis Pankratz
 Youth Center Manager – Shanice Hines
 Food & Nutrition Manager – Amy Marburger
 Case & Resource Manager – Rachel Berner
 Office Manager – Nicole Martin
 Home Visits – Ocean Smith
 Grant Writer – Faith Wise
 Success Coach– Rose Marie
 Office Assistant– June Hollinger
 Food Programs Assistant– Jodi R
 Bookkeeper – Justine Andes with Andes Business Services

Offering Help and Hope!

PURPOSE OF REQUEST

Greater Impact

CrossNet Ministries is the primary social services hub for Eastern Lancaster County. CrossNet programs focus on two areas; building relationships and building resources for sustainability. Here are some program highlights from 2021:

- Case managers walked alongside more than 600 individuals on a wide variety of concerns including homelessness, rent assistance, utility assistance, need for food, transportation and more
- 2,460 case management services provided by Social Services Team
- 21 individuals lived in CNM affordable housing programs, 7 households were served through rapid rehousing services in partnership with the county, and another 22 households were provided with emergency housing while awaiting long-term safe and affordable housing
- 26 individuals were empowered through money management and financial counseling services
- There are 30 active mentoring relationships between community members and participants
- An average of 407 individuals were served each month through the CrossNet Food Pantry
- 183 youth enrolled in Youth Center Programs (after school programs, tutoring, etc)

While offering help and hope in a variety of ways, empowering participants to build resources for sustainability is a priority in how CrossNet provides support. When an individual reaches out to CrossNet, the first step is to do an individual assessment to identify current needs, using '11 Resources Assessment' defined in the Bridges Out of Poverty, Getting Ahead curriculum: financial, emotional, mental, spiritual, physical, support systems, knowledge of hidden rules, relationships/role models, formal register, motivation and persistence, and integrity and trust. Resource-building opportunities are then provided based on the results of the assessment allowing each participant to work through an individual care plan to best assist them in overcoming barriers, building their confidence and increasing sustainability.

CrossNet will increase the resources of participants through a tailored package of support that could include:

- financial empowerment training (Money & Me Workshop, one to one budgeting, credit repair support)
- connecting individuals with social support (mentoring program, support from case managers)
- "Getting Ahead Workshop" (a 16-week program that engages those living in or near poverty as problem-solvers for themselves and their communities)
- use of time-limited financial assistance
- Safe and affordable transitional housing services (Pathways to Housing moves participants from homelessness to permanent housing over 18 months)
- case management services
- targeted support services in collaboration with local partners (counseling, micro-loan programs, etc)

CrossNet Ministries values collaboration and works with partners to facilitate support for the participants. Here are some important ways that takes place:

- CrossNet's Employer Resource Network and Success Coach program currently works with 9 local employers to assist with employee needs and provides support for employees to maintain employment
- Partnership with Good Samaritan Services provides a micro-loan program to help improve and repair credit scores
- Tenfold assists with financial empowerment training
- Community Action Program provides support for positive child development in the home through effective parenting intervention services
- ELANCO School District provides referrals and allows us to support student needs
- Career Link supports individuals seeking employment
- Community Services Group partners with us to provide mental health services

PURPOSE OF REQUEST

Greater Impact

In a community where 41% of households live at or below the poverty line, CrossNet seeks to provide quality support by partnering with other organizations to empower individuals to build necessary resources for quality of life.

Need to Expand:

Since 2017, CrossNet Ministries (CNM) staff offices, Food Pantry, and Youth Center have all been located in the 100 block of West Franklin Street in New Holland. Our location provides numerous benefits including an ability to have staff collaboration meeting greater needs for families in a cohesive way, and it is centralized in New Holland providing easier access for individuals utilizing CNM services. CNM has strong community ties, and the location provides potential for expansion to meet the growing needs of the ELANCO community.

CrossNet Ministries currently rents a portion of a warehouse owned by a local family (long-time supporters of CNM.) The desire has been to own the 30,700 square foot warehouse, and the land it sits on, to house the growth of the ministry and expand programs to meet the ongoing needs in the ELANCO community.

Some of the primary project goals of this expansion would be:

- Provide a central location of resources and support in the community to offer help and hope
- Expand the Youth Center space to offer programs for children from birth-12th grade
- Create a space for pre-school aged programming
- Encourage greater collaboration with other organizations by offering office spaces for them to work out of, becoming a hub of resources for the community – ie. counselors, Tenfold, pregnancy center, etc.
- Expand Food Pantry into a Food Market “shopping center” for participants, empowering them and offering a dignified “shopping” experience while also adding space for more food storage
- Expand CNM housing programs by renovating our current facilities (office and food pantry) for a Winter Shelter and a Crisis Shelter for families experiencing homelessness
- Create a donation drop-off center to be able to take additional donations of food, clothing, and furniture
- Provide offices for staff

The ELANCO community has demonstrated support and trust in CrossNet Ministries. We are excited to be in a position to expand not only our physical space, but the services we offer, helping community members overcome the barriers they face in life. We plan to continue offering help and hope in a trauma informed environment, where individuals of all ages can have their specific needs met.





WEST FRANKLIN STREET OVERVIEW PLAN // EXISTING

PROJECT AREAS + DESCRIPTIONS

KEY	AREA	DESCRIPTION
A2	9,421 SF	EXISTING YOUTH CENTER WITHIN LARGE WAREHOUSE BUILDING
C	1,650 SF	EXISTING CROSSNET OFFICES
D	3,400 SF	EXISTING CROSSNET FOOD PANTRY TO BECOME EMERGENCY HOUSING

NOTE:
AREAS ARE BUILDING FOOTPRINT ONLY, DOES NOT INCLUDE UPPER LEVELS/FLOORS.



22-009



WEST FRANKLIN STREET OVERVIEW PLAN // PROPOSED

PROJECT AREAS + DESCRIPTIONS

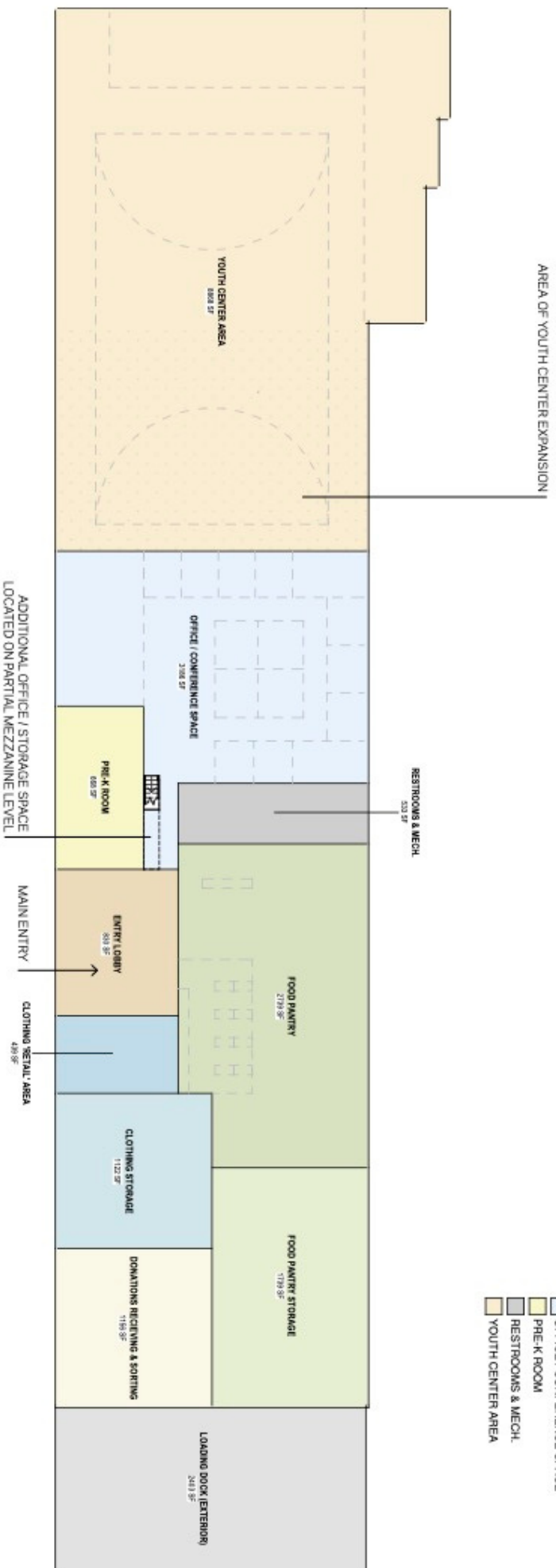
KEY	AREA	DESCRIPTION
A	30,700 SF	LARGE WAREHOUSE BUILDING INCLUDING WEDDING VENUE + YOUTH CENTER NOT INCLUDING LOADING DOCK
A1	9,421 SF	WEDDING VENUE EXISTING WITHIN LARGE WAREHOUSE BUILDING
A2	8,868 SF	YOUTH CENTER EXPANSION WITHIN LARGE WAREHOUSE BUILDING
A3	2,479 SF	LOADING DOCK EXTERIOR, UNDER ROOF OF LARGE WAREHOUSE
B	4,504 SF	AUXILIARY CORNER BUILDING EXISTING MACHINE RENTAL BUSINESS
C	1,650 SF	EXISTING CROSSNET OFFICES TO BECOME APARTMENTS
D	3,400 SF	EXISTING CROSSNET FOOD PANTRY TO BECOME EMERGENCY HOUSING

NOTE:
AREAS ARE BUILDING FOOTPRINT ONLY, DOES NOT INCLUDE UPPER LEVELS/FLOORS.



22-009

CROSSNET MINISTRIES



- BUILDING AREA LEGEND**
- CLOTHING RETAIL AREA
 - CLOTHING STORAGE
 - DONATIONS RECEIVING & SORTING
 - ENTRY LOBBY
 - FOOD PANTRY
 - FOOD PANTRY STORAGE
 - LOADING DOCK (EXTERIOR)
 - OFFICE / CONFERENCE SPACE
 - PRE-K ROOM
 - RESTROOMS & MECH.
 - YOUTH CENTER AREA





FRONT ENTRY [WEST FRANKLIN STREET]

22-009



MAIN ENTRY LOBBY AREA

22-009

How to GET INVOLVED

We are thrilled to have reached our fundraising goal of 3 million dollars to purchase and renovate the building!

We closed on the property on Thursday, January 5th and are currently working with a designer & project manager to create plans for the renovations.



There are still ways to give. Below are a few ways that you or your organization can get involved:

- We are still accepting donations
- Donate your time, resources or expertise to complete the renovations
- Share CrossNet's plan and goals with other businesses and individuals
- Join our Prayer List - contact office@elancocross.org

We exist to offer help and hope in the name of Jesus Christ by empowering people in the ELANCO community.

How to **GIVE**



1

Donate Online

Make a one-time gift or set up an automatic recurring donation towards this project.



2

Mail in Check

All checks should be payable to CrossNet Ministries and mailed to:

CrossNet Ministries

P.O. Box 154

New Holland, PA 17557



3

Via VENMO

You can pay by scanning the QR code or by searching CrossNet Ministries on the app.

CROSSNET MINISTRIES'
Expansion Project

Let's get in touch



Physical Address: 110, 123, 127 W Franklin St, New Holland, PA 17557

Mailing Address: PO Box 154, New Holland, PA 17557

Website: www.elancocross.org

Email: office@elancocross.org

Phone #: 717-355-2454